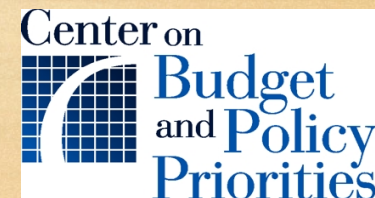


Community Eligibility Provision: Outreach to Eligible School Districts

April 15, 2015



CEP Election Season is Here!

April 15	<ul style="list-style-type: none">• State agencies send notifications of districtwide eligibility for CEP• LEAs share school-level data with State agencies
May 1	<ul style="list-style-type: none">• State agencies publish district and school-level eligibility lists
August 31	<ul style="list-style-type: none">• CEP election deadline for SY 2015-16

Community Eligibility Provision in Pennsylvania

Outreach Strategies

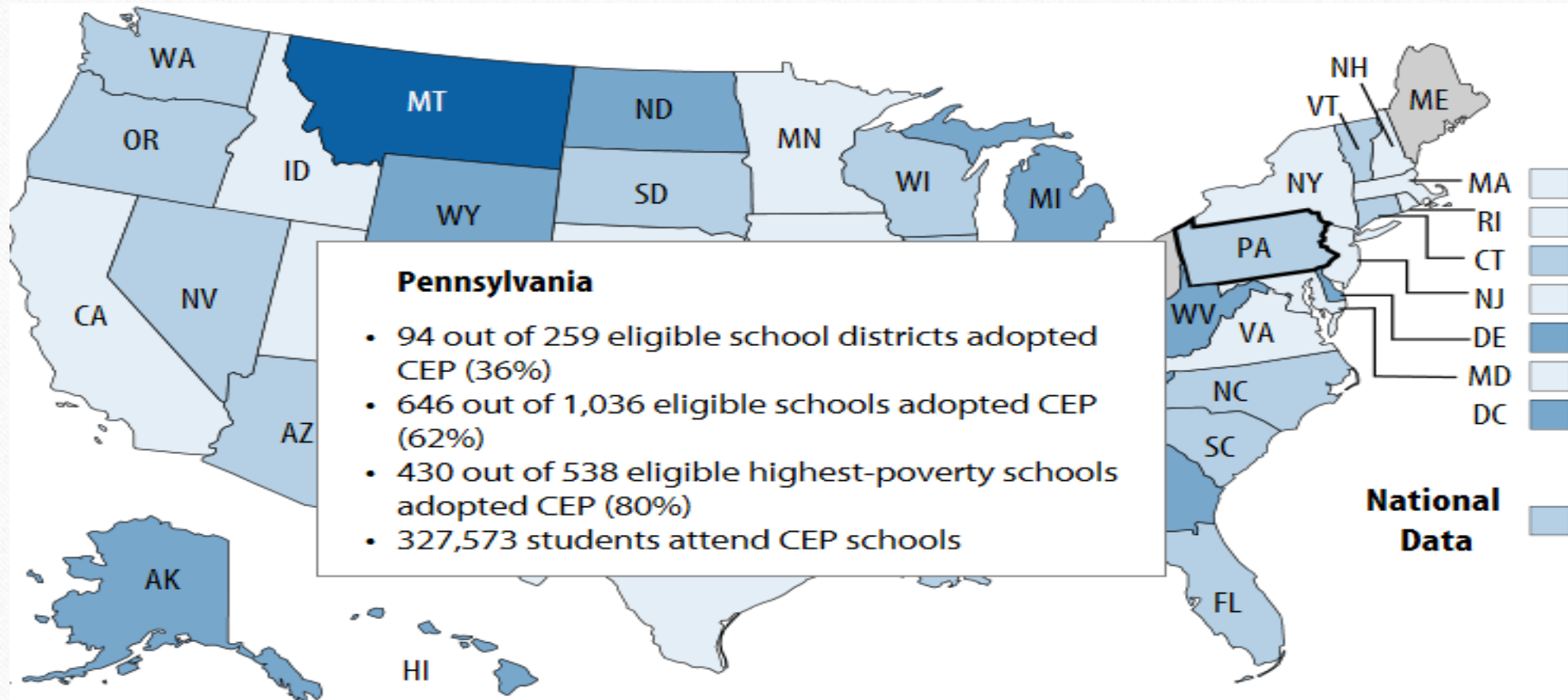
Vonda Cooke, M.S., R.D.

State Director, Child Nutrition Programs

Division of Food and Nutrition

Pennsylvania Department of Education

Community Eligibility Provision Outreach in Pennsylvania



Community Eligibility Provision Outreach in Pennsylvania

2010-11 SY

- Build awareness and excitement
- Dialogue about CEP with everyone possible
- Internal education on all potential impacts

2013-14 SY

- Letter from PA Secretary of Education to all LEAs
- Informative webinars to discuss qualifying for CEP
- Detailed webinars for those that thought they were qualified and interested
- Emailed and posted list of LEA's that were potentially eligible
- Training on signing up to implement CEP
- Encouraged Provision schools to convert to CEP

2014-15 SY

- Continue to discuss CEP at all possible venues
- Letter from PA Secretary of Education to LEA's with DC of 50% or more
- Letter from Division of Food and Nutrition to LEA's with DC of 60% or more
- One to one targeted outreach via e-mails and phone calls
- Face to face meetings
 - Review financial worksheets
- Use current CEP adopters to tell the story

Community Eligibility Provision in Montana Outreach Strategies

Alie Wolf

Business Analyst & Direct Certification Coordinator
School Nutrition Programs
Montana Office of Public Instruction

Planning & Preparation

- Montana Office of Public Instruction (OPI) received USDA direct certification grants to help with data collection; aided preparation for Community Eligibility Provision (CEP) implementation
- Report generated from the direct certification system listing schools with an identified student percentage between 30-40% and schools with at least 40% identified student percentage
- Proxy data sent to all eligible schools along with Letters of Intent and Agreement forms to be returned to OPI
- OPI Posted eligible schools on the OPI website by May 1

Working with schools

- Provided guidance to schools considering CEP
 - CEP reimbursement estimator tool
- Assisted schools with the new direct certification system to improve identified student percentages
 - On site technical assistance
 - Phone calls and emails
 - Regional trainings

Interdepartmental Partnerships

- OPI Superintendent's Office and Title 1 Staff
- Governor's Office
- Montana No Kid Hungry, Dept. Public Health & Human Services

Other Partnerships

- Montana Food Bank Network

Communication & Outreach with Partnerships

- The Montana Food Bank Network sent a press release and made follow up phone calls to schools
- The Governor's office sent a "chaser" letters to districts with 40% and above schools, the Governor made phone calls to superintendents, and the First Lady wrote an op-ed
- Weekly updates with all partners of Montana's CEP status

Community Eligibility Provision in North Carolina

Outreach Strategies

Cedric D. Johnson
Public Policy Analyst
Budget & Tax Center
North Carolina Justice Center

Helpful CEP Resources

USDA Community Eligibility website:

<http://www.fns.usda.gov/school-meals/community-eligibility-provision>

Includes:

- Policy guidance
- Program requirements/information
- Reimbursement estimator & grouping tool
- CEP guidance from other Federal agencies
- Webcast recordings

Helpful CEP Resources

Center on Budget & Policy Priorities – www.cbpp.org/database

Food Research & Action Center – www.frac.org/community-eligibility

- **Implementation Guide**

<http://www.cbpp.org/files/10-1-13fa-guide.pdf>

- **Alternatives to School Meal Applications**

<http://www.cbpp.org/cms/?fa=view&id=4155>

Save the Date:

CEP Webinar Series

Title I & E-Rate
Wed., April 29
1-2 pm

Log-in: <https://www.livemeeting.com/cc/usdafns/join?id=BPS572&role=attend&pw=P%20n6%2BZCmx>

Attendee Entry Code: P)n6+ZCmx

Meeting ID: BPS572

Dial-in : 888-240-9284

Questions?

Thank you for
participating!